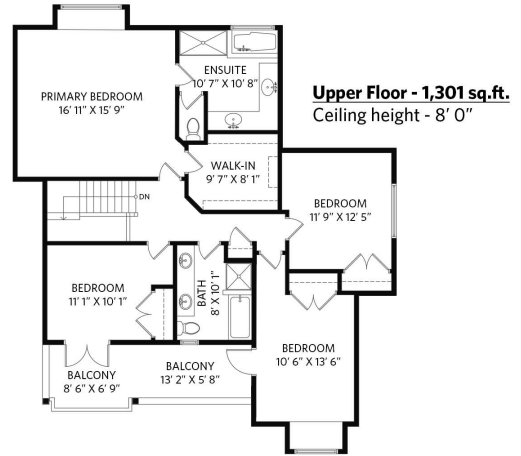
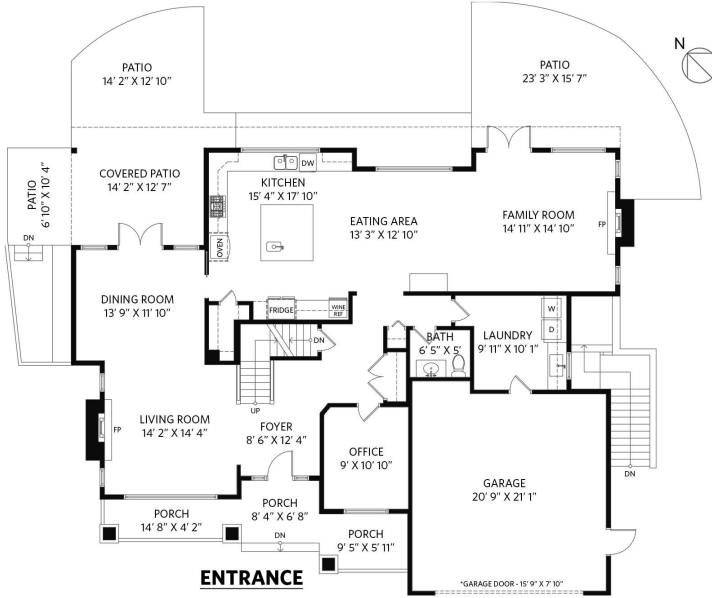


# 2070 Whitman Avenue, North Vancouver

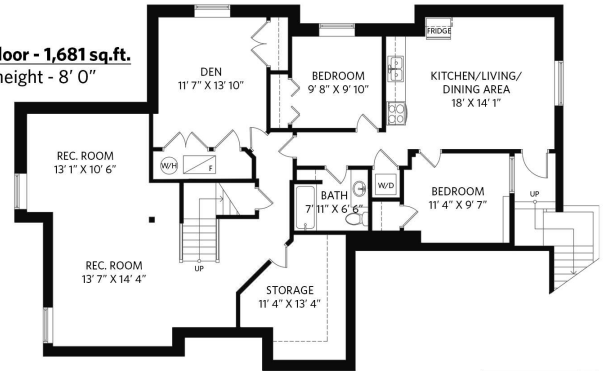
6 bedrooms + den + office + 3 1/2 bathrooms

Lower Floor:	1,681 sq.ft.	Garage:	473 sq.ft.
Main Floor:	1,690 sq.ft.		
Upper Floor:	1,301 sq.ft.		
<b>Total Interior:</b>	<b>4,672 sq.ft.</b>		

**Main Floor - 1,690 sq.ft.**  
Ceiling height - 9' 0" to 17' 10"



**Lower Floor - 1,681 sq.ft.**  
Ceiling height - 8' 0"



www.OPTIMUMFLOORPLANS.com 4K Matterport Tours 2D & 3D Floor Plans 604-729-5033



Floor plan measurements, dimensions, square footage, existing structures & features are approximations and for illustrative purposes only. We make no guarantee, warranty, or representation, expressed or implied, as to the accuracy and completeness of this rendering. Independent verification is recommended. E&O Insured for \$1,000,000